



July 2023

Te Whenua, Te Tāngata, Te Ao Āmua
The Land, The People, The Future

Tū Tama Roto, Tū Tama Waho

To know oneself, is to know others

Message from the
Chairs, Anaru Smiler
and Liz Mellish

WTT and PNMRT
Trustee Election and
Nominations

Thirty seven local
rangatahi attend Kura
Huna Wānanga 2023

Message from the Chairman Wellington Tenth Trust, Anaru Smiler



Tēnā koutou, ka nui te mihi

Wellington Tenth Trust Trustees remain focused on our values especially when making business decisions and remain conscious of growing our connections, prosperity and mana on behalf of you and your whānau.

I was pleased along with our team at Hikoikoi to attend the signing of our Memorandum of Partnership with Upper Hutt City Council and continue to build and strengthen these valuable relationships with local government

entities in our rohe. Our team continue to work with Wellington City Council on the return of Granville Flats site to the Trust over the next 18 months and scoping out potential opportunities for its future development.

The Wellington Waterfront and Whairepo Lagoon will come alive on 20 July as our Ahu Whenua Trusts host 'Hinemoana Ka Eke' to welcome wāhine who are about to play in the biggest football matches of their lives. Wellington's celebrations will feature our waka 'Te Hononga' and tamariki from our Kura Ahurea kura performing waiata 'Hineahuone' written specifically for Kura Ahurea. Our Trusts are excited to be part of this amazing event that will reach a global audience and showcase Māori storytelling that celebrates wāhine throughout Aotearoa, while providing a platform to educate ourselves while educating others.

Our investment in our Kura Ahurea kaupapa has enabled us to be a part of this event and demonstrates how it is moving from strength to strength with

some 67 kura in our rohe now receiving cultural education from a Te Atiawa, Ahu Whenua Trust perspective. We anticipate this number to grow as events like 'Hinemoana Ka Eke' coinciding with Matariki celebrations highlights the importance of Te Ao Māori values and matāuranga Māori.

On behalf of Trustees, we look forward to meeting you again at our Annual General Meeting Saturday 2 September 2023 at Te Raukura, Te Wharewaka o Pōneke.

Ngā mihi kia koutou

Anaru Smiler

**Chairman
Wellington Tenth Trust**

Message from the Chairman Palmerston North Māori Reserve Trust, Liz Mellish, MNZM



Nei rā te mihi ki a koutou e te whānau kua eke mai nei ki tēnei pānui ki te kōrero i ngā kaupapa.

I wish to acknowledge whānau who have passed recently and their loved ones, especially our former trustee Te Riria Puketapu of Puketapu Grove, Lower Hutt. Teri as he was known to us all, was a founding trustee of Palmerston North Māori Reserve when we battled to have Advisory Trustees, then Managing Trustees. Then, finally we took full control of our lands and business as full trustees in 2004. Teri was thoughtful and worked well with fellow trustees until he resigned in 2010.

Moe mai ra, moe mai ra, moe mai ra, Teri.

We are now in the process of preparing for our AGM which is to be held in Palmerston North at the Copthorne Hotel Conference Centre, 100 Fitzherbert Street, Palmerston North. This is to be held on August 26th at 10am. I ask that you arrive at least half an hour earlier to complete registration.

It has been a busy year as we completed our three new retail shops on Rangitikei Street and started Stage One of the new retirement village as part of Metlifecare Palmerston North. We have demolished old and tired buildings, and renovated others, so our Hikoikoi Management Ltd team led by Vicki Hollywell has been stretched to the limit to keep us ahead of the game. Trustees determined that we would take a development break in 2023 and 2024 year as the activity has been monumental, and in this year of real difficulties in many areas it was entirely the right call.

The cost increases in everything from groceries, insurance, building costs as well as our retail tenants and

businesses struggling, has made our management more complex.

We have kept our shoulders to the wheel to ensure we can maintain our forward trajectory and distribution to you, our owners firmly in our sight.

I want to really thank our staff who have managed our day-to-day business so well and kept owners in their minds, as have trustees, so we can deliver a dividend that can help you all in your daily lives as we struggle in this financial climate.

I, along with Trustees and staff, look forward to seeing you all at our AGM.

Ngā mihi nui whānau

Liz Mellish, MNZM
Chairman Palmerston North Māori Reserve Trust

Contents



02

Message from the Chairman
Wellington Tenth Trust,
Anaru Smiler



03

Message from the Chairman
Palmerston North Māori Reserve
Trust, Liz Mellish, MNZM



05 - 14

2023 Annual General Meeting
information and proxy forms



17

Reconnecting with
Te Rā Ringa Raupa



18

Te Raukura Te Wharewaka o
Pōneke tours team host Super
Hui – Te Kāhui Kura



19

Thirty seven local rangatahi
attend Kura Huna Wānanga



About


The Wellington Tenth and Palmerston North Māori Reserve Trusts have been established since 1839 and 1866 respectively and are Ahu Whenua Trusts (Te Ture Whenua Māori Act, 1993).

The Trusts administer Reserved Lands on behalf of the land owners.

Contact Info

 wtm.maori.nz

 pnmrt.maori.nz

 0508 445 645

 info@tekau.maori.nz

 facebook.com/wttnz

 facebook.com/pnmrt

 Wellington Office
Level 1, Te Raukura (Wharewaka)
2 Taranaki St, Wellington Waterfront

Executive Office, PO Box 39294,
Lower Hutt, 5045

FRONT COVER IMAGE:

Te Raukura

BACK COVER IMAGE:

Copyright 2022 with permission from David Hakaraia,
Artist

IMAGE: Te Wharewaka o Pōneke

PUBLISHED BY:

Hikoiko Management Limited

DESIGN AND LAYOUT:

DHC Events & Creative

CONTRIBUTIONS:

Editorial contributions and ideas are welcomed.
They can be emailed to info@tekau.maori.nz. Please
include the writers name and a high resolution image
to accompany the story.

Hikoiko Management Limited will hold the copyright
for submitted articles and photographs published.
Articles and photographs in this publication cannot be
published elsewhere without permission.

Unclaimed Distribution - PNMRT

Continuing our focus for 2023 we would love to reconnect with our owners or whānau who need to succeed to their shares in the Māori Land Court. If you recognise any of these names, or their whānau please contact the Executive Office.

Phone: 0508 445 645, if in Wellington call 473 2502. **Email:** info@tekau.maori.nz

Margaret Josephine **Puriri**
Ephra Mary **Garrett**
Tahu Edwin **Tanerau**
Hapi-Davey Mokopuna **Rangatira Whānau Hapu**
Tariki Whānau Trust
Ronald Francis **Tuki**
Janice Riri **Robertson**
William **Rawhiti**
Nga Uri Kingi/Te Paki **Whakatupukanga Trust**
Amelia Frances **Sturmey**
Arthur Louis **Sturmey**
Roger Creighton **Ranger**
Rota Waitoa **Enoka Whānau Trust**
Brian **King**
Pita Pete **Manaia**
Florence Louisa **Handley**
Etu Tokotaha **Tokotaua**
Thomas **Mana**
Pani Ngaro **Mary**
Te Rapatu **Apemerika**
Rata Rangi **Hapi**
John Denis **Brown**
Te Karu **Hapimana**
James **Coffey**
Te Teira Waiwhakaiho Whānau **Māori Incorp Trust**
John **Te Paki**

Pio Brian Charles **Perno**
Ripeka **Talavai**
William John **Skipper**
Wiremu **Hapi II**
Hema **Hapi**
Hori Potatau **Graham**
Jacqueline **T Edwards**
Molly **Mauriri**
Ross William **Nunn**
John **Luke**
Jenkins / **King Whānau Trust**
Jarvis **Coffey**
The Hokena Whiunui **Rangirerewai Whānau Trust**
Hohepa **Tapiki**
Shirley **Whiunui**
Wene **Heikura**
Queenie **Luke**
Shirley Rangi Kaira **Edwin**
Milton **Mako Whānau Trust**
Dorothy Mary **Hedley**
Robert **Rakei**
Masie **Harvey**
Wiremu Manihera **Jones**
Ngamanakitanga **Heikura**
Kay Marie **Hapimiraki**

AGM Notification



Te Whenua, Te Tāngata, Te Ao Āmua
The Land, The People, The Future

Palmerston North Māori Reserve Trust AGM

Date

Saturday 26 August 2023

Venue

Copthorne Palmerston North,
110 Fitzherbert Ave, Palmerston North

Time

Commences at 10:00am – 12:00pm followed by lunch

Registration from 9am

- Updates will be posted on our website
and social media



Unclaimed Distribution - Wellington Tenths Trust

Continuing our focus for 2023 we would love to reconnect with our owners or whānau who need to succeed to their shares in the Māori Land Court. If you recognise any of these names, or their whānau please contact the Executive Office.

Phone: 0508 445 645, if in Wellington call 473 2502. **Email:** info@tekau.maori.nz

Te Wehe

Henare Pumipi Rangitihī **Tahuparae**
Te Poari **Horoaka**
Roka **Marangai**
Whiunga **Taiaha**
Henare **Tauroto**
Margaret Jospehine **Puriri**
Arthur Caleb **Pitt**
Hare **Heiheinga**
Winifred Whaetahao **Harvey**
Paramena **Tutunui**
Waiku Ngaranga **Teiwimate**
Wharau **Manuao**
Christine Ngaki **Creed**
Ngakareti Hanikamu **Parai-Dawson Whānau Trust**
Makonga **Tupoki**
Mere **Ruaputaanga**
James **Morgan**
Tiakirua **Mokena**
Erina **Pokekuwaho**
Hekiera **Te Waipoariki**
Hori **Rawakore**
Pitama Tahurangi **Burnsky**
Irina Rebecca **Ratapu**
Rawiri Bennett **Mason**

Myra Aroha Memory Love

Rangiwaiaata Rangitihī **Tahuparae**
Pitama Tahurangi **Burnsky**
Tare (Charlie) **Rangipunga II**
Roto Waitoa **Enoka Whānau Trust**
Hone **Momona**
Mataka **Taiawhio**
Te Ra Torua **Hinga**
Pani Ruatapu **Tamihana**
Gladys Evelyn **Harwood**
Kareti **Tutai**
Tariki Whānau Trust
Atanatiu **Te Puni Whānau Trust**
Hira **Kapo**
Mihipera **Jacobson**
Raymond **Luke**
Umahau **Ngapapa**
Kepa **Whare**
Tohuroa **Te Horo**
Turuhira **Taraki**
Whia **Whare**
Te Ra **Motu**
Te Whiu **Ngapapa**
Wi **Kapu**
Naumaikiteao **Ritai**

AGM Notification



Wellington Tenths Trust Annual General Meeting

Date

Saturday 2 September 2023

Venue

Te Raukura, Te Wharewaka o Pōneke
2 Taranaki St, Wellington

Time

Commences at 10:00 – 11:30am followed by lunch

Registration from 9am

- Livestreamed

- Updates will be posted on our website and social media



PNMRT Trustee Election and Nominations

The three year terms of Managing Trustees Takiri Cotterill and Paula King expire at the Annual General Meeting and these trustees are eligible for re-election. If more than two nominations are received then an election will be necessary.

All nominations for Trustee positions must be lodged with the Executive Office in writing and received by 12 noon, 18 August 2023.



Takiri Cotterill

Tribal Affiliation: Te Ātiawa

As a Trustee for the Palmerston North Māori Reserve Trust Takiri brings a passion to see whānau, hāpu and iwi development in all aspects of our lives.

Takiri has experience as a Company Director for Alpha Corporation Limited and Coastland Shoppingtown Limited and really enjoys being involved as a Ngahuru Charitable Trust Trustee, supporting social and cultural development initiatives that come under the Wellington Tenth Trust and Palmerston North Māori Reserve Trust umbrella.

Takiri has been an integral member of Te Rōpu Raranga o Manaia for the past 11 years which is supported by the Ngahuru Charitable Trust. Takiri has 30 years social work experience in the area of whānau Māori well-being including community development and working with rangatahi and tamariki care and protection.



Paula King

Tribal Affiliations: Ngaruahine, Ngāti Ruanui, Te Ātiawa, Taranaki Iwi

Proudly Taranaki born and bred, Paula lives in Hawera. Her qualifications and experience are in Business (Trustee and Company Director), Education (Head of Department - Accounting, Economics and Financial Literacy; and Careers Advisor), and Property Management. Paula utilises these skills as a member of our Audit and Risk Committee.

In the community Paula has volunteered as a Teacher Aide, Budget Advisor, and Auditor. She has also served as a coach, manager and administrator for multiple sporting codes. Paula has a personal interest in whakapapa research and relishes spending time with her whānau.

Proxies

In the centre of this newsletter are two proxy forms, one is for the Wellington Tenth Trust and one for Palmerston North Māori Reserve Trust. For those who do not attend in person we encourage you use the proxy form to vote.

The form will also be available to download from our websites, or you can request a proxy form be sent to you by contacting our Executive Office: info@tekau.maori.nz or phone 0508 445 645 or 04 473 2502

Nomination Process

Nominations must include the name, address and shareholder number of the proposer and seconder (each of whom shall be a beneficial owner or a descendant of a beneficial owner) and be signed by the nominee as willing to stand. Each nominee shall prepare a one page (150 word maximum) biographical statement for distribution to the beneficial owners at the AGM.

All biographical statements received by the Wednesday prior to the AGM will be posted on our respective websites.

WTT Trustee Election and Nominations

The three year terms of Managing Trustees **Venessa Ede**, **Mahara Okeroa** and **Richard Te One** expire at the Annual General Meeting and these trustees are eligible for re-election. If more than three nominations are received, then an election will be necessary.

All nominations for Trustee positions must be lodged with the Executive Office in writing and received by 12 noon, 25 August 2023.



Venessa Ede

Tribal Affiliation: Te Ātiawa

Venessa was first elected as a Trustee for Wellington Tenth Trust in 2011 and has a governance, commercial and accounting background.

Venessa is a registered Associate Chartered Accountant (ACA) and holds a Graduate Diploma in Business Studies from Massey University and a Bachelor of Commerce and Administration (BCA) from Victoria University. She has worked as an Accountant in Marlborough and Nelson over the last 21 years including for the Marlborough District Council, Port Marlborough New Zealand and Wakatū Incorporation. Venessa is a Managing Trustee of the Island Moutere Love Trust, dealing with property management, investment and development, and whānau support and kaitiaki for a whānau taonga collection.

Venessa is also an elected Trustee and Vice-Chair for the Te Ātiawa o Te Waka-a-Māui Trust (the Post-Settlement Governance Entity and mandated Te Ātiawa iwi authority of Te Tau Ihu) and its predecessor since 2006. Venessa has had a strong involvement with iwi commercial and economic development through the Waitangi Claim Settlement negotiations process.



Mahara Okeroa

Tribal affiliations: Te Ātiawa, Taranaki Iwi

Mahara was born in Waitara, Taranaki, and has strong tribal links to Te Ātiawa and Ngāti Maniapoto in the North, Taranaki in the West, Ngāti Ruanui and Nga Rauru in the South. His formative years were spent at Parihaka where the teachings of Te Whiti and Tohu had a direct influence on his attitudinal development.

Mahara has had numerous roles mostly held in education and from 1999-2008 was a Member of Parliament for Te Tai Tonga and held roles as Associate Minister of Social Development and Employment, Associate Minister for Arts, Culture and Heritage and Associate Minister for Conservation.

Mahara's core knowledge and skills area is in executive governance, machinery of government, public policy and service, project and contract management, strategic planning, whānau, hapū, iwi, Māori development.

Mahara was a negotiator for the Taranaki Claim and currently a Consultant between Crown agencies and the Treaty partner, and has been a Trustee for the Wellington Tenth Trust since 2014.



Richard Te One

Tribal Affiliations: Te Ātiawa, Taranaki Iwi

A resident of Lower Hutt, Richard is married with two daughters.

He is currently employed by Hikoiki Management in a relationship liaison role. Prior to this he was self-employed for 14 years in his own gardening business and before that he spent 13 years in the public health sector where he had a particular focus on the public health regulatory aspects of the Sale of Liquor Act and the Smokefree Environments Act.

Richard is also a musician who has played professionally for nearly forty years in New Zealand and internationally, and he continues to play locally in various bands.

Wellington Tents Trust AGM Transportation Timetable

2 September 2023

To Te Raukura, Te Wharewaka o Pōneke | New Plymouth to Wellington

Departure Time: 4:00am - Please be there at 3:50am - Ariki bus depot, New Plymouth

Stop	Departing	Pick Up Location	Address
A	4.00 am	New Plymouth : Bus Depot	19 Ariki Street, New Plymouth
B	4.15 am	Inglewood : Train Station	Inglewood Train Station Carpark (Matai Street, opposite Fern Lodge)
C	4.30 am	Stratford : Z Service Station	cnr Broadway & Regan Strs, Stratford
D	5.00 am	Hawera : Weir Bros Depot	17 Turuturu Road, Hawera
E	6.15 am	Wanganui : BP Station	185 London Street, Wanganui
F	7.00 am	Bulls : Convenience Centre	113 Bridge Street, Bulls
	9.15 am	Wellington	2 Taranaki Street, Wellington

Depart Wellington approx 1:00pm to return to New Plymouth – arrive approx. 7:00pm at final destination.

Palmerston North Māori Reserve Trust AGM Transportation Timetable

26 August 2023

To The Copthorne Hotel Palmerston North | Hawera to Palmerston North

Departure Time: 7:00am - Please be there at 6:50am - Weir Bros Depot, Hawera

Stop	Departing	Pick Up Location	Address
A	7.00 am	Hawera : Weir Bros Depot	17 Turuturu Road, Hawera
B	8.15 am	Wanganui : BP Station	185 London Street, Wanganui
C	8.45 am	Bulls: BP Service Station	5 Funnell Street, Bulls
D	9.15 am	Palmerston North	110 Fitzherbert Ave, Palmerston North

Depart Palmerston North approx 1:30pm to return to Hawera – arrive approx. 4:00pm at final destination.

26 August 2023

To The Copthorne Hotel, Palmerston North | Petone to Palmerston North

Departure Time: 7:25am - Please be there at 7:15am - Hikoikoi, 24d Marine Parade, Petone

Stop	Departing	Pick Up Location	Address
A	7.25 am	Hikoikoi	24d Marine Parade, Petone
B	9.15 am	Palmerston North	110 Fitzherbert Ave, Palmerston North

Depart Palmerston North approx 1:30pm to return to Petone – arrive approx. 3:30pm

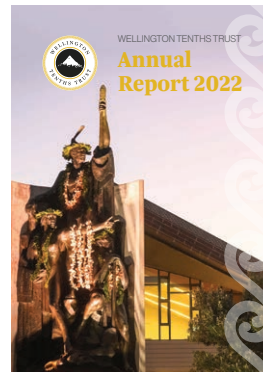
If you wish to be picked up along the way, you will need to phone the office to book a seat.

Annual Reports

Trustees of both Trusts look forward to providing owners with the financial statements and reporting on the developments over the past year in their Annual Reports.

The Annual Reports are currently being produced and will be available to view online through both Trusts websites three weeks prior to the commencement of each AGM. We will continue to have copies available for owners upon request. The Annual Report produced for the AGMs will be an abbreviated version to make it easier to follow our success. Consolidated Financial Statements will be available on our websites.

If you would like a copy of our Annual Report once produced please contact us at the Executive Office: info@tekau.maori.nz or phone 0508 445 645 or 04 473 2502



AGM Livestreaming

The 2023 AGM's will once again be livestreamed providing a great way to connect with our owners and reach those unable to attend in person.

Again, no matter where you are, you will have the opportunity to go online via our websites and join the livestream of each meeting. To register your interest in viewing our AGM via livestream contact us at the Executive Office: info@tekau.maori.nz or phone 0508 445 645 or 04 473 2502



**Unite
against
COVID-19**

**Please stay home
if you are sick**



PO Box 39294, Wellington Mail Centre, Lower Hutt 5045
24d Marine Parade, Hikoikoi 5012
Phone: 04 473 2502 or **Freephone:** 0508 445 645
Email: info@tekau.maori.nz

Palmerston North Māori Reserve Trust

Proxy Form 2023

I _____

OF _____

BEING AN OWNER IN THE PALMERSTON NORTH MĀORI RESERVE TRUST

SHAREHOLDER NUMBER _____

DO HEREBY APPOINT _____

OR FAILING HIM/HER _____

TO ACT AS MY PROXY TO ATTEND AND VOTE ON ALL MATTERS AT THE ANNUAL GENERAL MEETING OF
BENEFICIAL OWNERS TO BE HELD ON SATURDAY 26 AUGUST 2023, AND AT ANY ADJOURNMENT THEREOF.

DATED THIS _____ DAY OF _____ 2023

SIGNATURE OF OWNER _____

IN THE PRESENCE OF WITNESS
(SEE 11.25 OF THE ATTACHED PROXY VOTING RULES) _____

OCCUPATION _____

ADDRESS _____

NOTES:

The proxy form when completed must either be handed in at the meeting or lodged with the secretary or the executive office of the Trust before 10.00am on the working day before the meeting (see 11.26 of the attached Proxy Voting Rules)
A proxy must be an owner or a descendant of an owner (see 11.23 of the attached Proxy Voting Rules)



Palmerston North Māori Reserve Trust

Proxy Voting Rules

The rules are contained at clause 11 of the Trust Deed and are set out as follows:

PROXY

11.23 A proxy must be an owner or a descendant of an owner.

11.24 If an owner giving the proxy is opposed to:

- a** any exchange;
- b** any lease;
- c** any other proposed resolution;

he or she is entitled to direct his or her proxy to vote against any of these. For that purpose he or she must write in the space provided on the proxy such directions as he or she requires, namely:

- d** I direct my proxy to vote against any exchange; or
- e** I direct my proxy to vote against any lease of the land; or
- f** I direct my proxy to vote against the proposed resolution.

11.25 The persons following are qualified to act as witness to a signature on a proxy form:

Kaumātua
Solicitor of the High Court
Justice of the Peace
Officer of the Māori Land Court
Licensed Interpreter of the Māori language
Registered Medical Practitioner
Officiating Minister
Registered Nurse
Registered School Teacher
Officer of the Department of Justice
Chartered Accountant.

11.26 The proxy form when completed must either be handed in at the meeting or lodged with the secretary or the executive office of the Trust before 10.00am on the working day before the meeting.

INSTRUMENT OF APPOINTMENT

11.27 No person shall be entitled to vote as proxy at a meeting unless the chairperson of the meeting is satisfied that the instrument containing his or her appointment is prima facie in order.

11.28 If any instrument of appointment is ruled by the chairperson to be out of order, the reason for the ruling shall be certified on the instrument.

11.29 The chairperson of the meeting shall, on request, give to any person entitled to vote at the meeting an opportunity to inspect any instrument of appointment which has been lodged and to raise any objection to the instrument.

CANCELLATION AND LAPSE OF APPOINTMENT

11.30 An appointment as proxy may be cancelled by the person who has given the proxy by writing by him or her and either lodged at the notified office of the Trust before 10.00 am on the last working day before the day of the meeting or lodged with the chairperson of the meeting.

11.31 An appointment as proxy shall lapse on the death of the person giving the proxy or on the cancellation of the appointment as provided in the immediately preceding subclause.

11.32 If a person who has appointed a proxy attends the meeting personally and notifies the chairperson that he or she is present and the chairperson notifies the meeting accordingly the proxy shall not vote for him or her after the chairperson's notification, but the validity of voting which has already been completed prior to that notification to the meeting shall not be affected thereby.



PO Box 39294, Wellington Mail Centre, Lower Hutt 5045
24d Marine Parade, Hikoikoi 5012
Phone: 04 473 2502 or **Freephone:** 0508 445 645
Email: info@tekau.maori.nz

Wellington Tenth's Trust

Proxy Form 2023

I _____

OF _____

BEING AN OWNER IN THE WELLINGTON TENTHS TRUST

SHAREHOLDER NUMBER _____

DO HEREBY APPOINT _____

OR FAILING HIM/HER _____

TO ACT AS MY PROXY TO ATTEND AND VOTE ON ALL MATTERS AT THE ANNUAL GENERAL MEETING OF
BENEFICIAL OWNERS TO BE HELD ON SATURDAY 2 SEPTEMBER 2023, AND AT ANY ADJOURNMENT THEREOF.

DATED THIS _____ DAY OF _____ 2023

SIGNATURE OF OWNER _____

IN THE PRESENCE OF WITNESS

(SEE 11.25 OF THE ATTACHED PROXY VOTING RULES)

OCCUPATION _____

ADDRESS _____

NOTES:

The proxy form when completed must either be handed in at the meeting or lodged with the secretary or the executive office of the Trust before 10.00am on the working day before the meeting *(see 11.26 of the attached Proxy Voting Rules)*
A proxy must be an owner or a descendant of an owner *(see 11.23 of the attached Proxy Voting Rules)*



Wellington Tenth's Trust

Proxy Voting Rules

The rules are contained at clause 11 of the Trust Deed and are set out as follows:

PROXY

11.23 A proxy must be an owner or a descendant of an owner.

11.24 If an owner giving the proxy is opposed to:

- a** any exchange;
- b** any lease;
- c** any other proposed resolution;

he or she is entitled to direct his or her proxy to vote against any of these. For that purpose he or she must write in the space provided on the proxy such directions as he or she requires, namely:

- d** I direct my proxy to vote against any exchange; or
- e** I direct my proxy to vote against any lease of the land; or
- f** I direct my proxy to vote against the proposed resolution.

11.25 The persons following are qualified to act as witness to a signature on a proxy form:

Kaumātua
Solicitor of the High Court
Justice of the Peace
Officer of the Māori Land Court
Licensed Interpreter of the Māori language
Registered Medical Practitioner
Officiating Minister
Registered Nurse
Registered School Teacher
Officer of the Department of Justice
Chartered Accountant.

11.26 The proxy form when completed must either be handed in at the meeting or lodged with the secretary or the executive office of the Trust before 10.00am on the working day before the meeting.

INSTRUMENT OF APPOINTMENT

11.27 No person shall be entitled to vote as proxy at a meeting unless the chairperson of the meeting is satisfied that the instrument containing his or her appointment is prima facie in order.

11.28 If any instrument of appointment is ruled by the chairperson to be out of order, the reason for the ruling shall be certified on the instrument.

11.29 The chairperson of the meeting shall, on request, give to any person entitled to vote at the meeting an opportunity to inspect any instrument of appointment which has been lodged and to raise any objection to the instrument.

CANCELLATION AND LAPSE OF APPOINTMENT

11.30 An appointment as proxy may be cancelled by the person who has given the proxy by writing by him or her and either lodged at the notified office of the Trust before 10.00 am on the last working day before the day of the meeting or lodged with the chairperson of the meeting.

11.31 An appointment as proxy shall lapse on the death of the person giving the proxy or on the cancellation of the appointment as provided in the immediately preceding subclause.

11.32 If a person who has appointed a proxy attends the meeting personally and notifies the chairperson that he or she is present and the chairperson notifies the meeting accordingly the proxy shall not vote for him or her after the chairperson's notification, but the validity of voting which has already been completed prior to that notification to the meeting shall not be affected thereby.

Metlifecare PAN Development

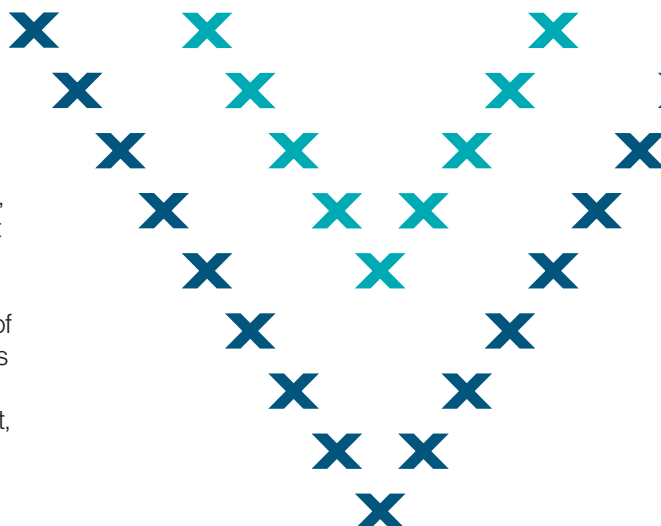
Work continues on the Metlifecare PAN Development at great pace.

Practical completion has been achieved for twelve villas and work has now commenced on the remaining eleven.

From architecture, amenities and activities to high quality and personalised care, our partnership with Metlifecare focuses on supporting

every resident to live their best retirement, without compromise, so they can live the life they want to live.

The new villas are an extension of the existing village that continues to create a community that feels connected and supported. Light, modern and inviting, it has been exciting to see this development and the villas come to life.



UHCC Memorandum of Partnership

“Tēnei ake anō ko ngā kiwei o te kete. Kei a au tōku, kei a koe tōu.”

This is indeed the handles of our basket. I have one handle, and you have the other.

Our shared commitment to a partnership between Hikoikoi Managment Limited on behalf of Wellington Tenth Trust and Palmerston North Māori Reserve Trust with Upper Hutt City Council was formalised on 31 May with the signing of a Memorandum of Partnership.

This memorandum outlines the principles and opportunity for leadership and working together for the wellbeing of Upper Hutt City and its people. The memorandum formalises the mana whenua relationship between Council and the Trusts that has been developing for many years.



Village at the Park Update

Village at the Park is one of Wellington's most centrally located comprehensive lifestyle villages.



Village at the Park Lifecare has eight new villas due for completion by the end of July. The new villas have a large open plan kitchen, dining and lounge with fantastic views from the outside deck, looking across to the hills.

Once the eight new builds are completed Village at the Park Lifecare will have a total of 51 villas, 19 being new builds.



Maori Land Court new online portal - Pākata Whenua

Pākata Whenua, the Māori Land Court new online portal was launched in May 2023. Pākata Whenua will replace Māori Land Online and the Māori Land Information System (MLIS).

Once Pākata Whenua is live, it is anticipated that it will take some time to catch up with applications and fully embed the new system in everyday mahi. Pākata Whenua will streamline Māori Land Court services and make

information about whenua Māori more accessible for you and your whānau.

Please visit www.maorilandcourt.govt.nz for information about how the Court is operating during this time before visiting a Māori Land Court office or hearing. You can access any application forms directly from the website and they recommend you provide all supporting documents at the time that you submit your application.



Reconnecting with Te Rā Ringa Raupa

Te Rōpū Raranga o Manaia weavers had an amazing two days at Hikoiko reconnecting with Te Rā Ringa Raupa, the Rā weavers from Northland who we met in 2021 in the beautiful Hokianga.

This amazing rōpū have fulfilled a challenge laid down in 1922 by Te Rangi Hiroa (Sir Peter Buck) by discovering the long lost techniques used to create a traditional Māori sail. Their completed, full-sized sail known as Māhere Tū ki te Rangi is a full scale

replica of the only serving example of a traditional Māori sail. Te Rā is in a vault at the British Museum in London.

Te Rōpū Raranga o Manaia are very privileged to be given the opportunity to pick up the wero to weave a traditional sail and were introduced to this big kaupapa, tiny details, lots of deep kōrero as well as lots of laughs and waiata.

Ka nui te aroha ki a koutou ngā wāhine toa o tēnei mahi rangatira.



Photo credit: Poutama Heteraka at the Hihiaua Cultural Centre, Whangarei



Super Hui – Te Kāhui Kura

On 6 April 2023, just before the Easter break our tours team held a Super Hui, where more than 250 principals, deputies and teachers gathered at Te Raukura Te Wharewaka o Pōneke from Te Kāhui Ako (Capital City).

They engaged in a variety of workshops presented by our Te Wharewaka tours team and Te Kāhui Kura team. Te Kāhui Kura consists of three kaupapa: Kura Ahurea, Kura Hautū and Kura Taiao.

The Super Hui provided an opportunity for the schools' executives and staff to further connect with mana whenua in line with the new curriculum refresh, and to continue to build their knowledge of our local history through a mana whenua lens.

The morning began bright and early as we welcomed our manuhiri into Te Wharewaka. The mihi and karakia by Neavin Broughton set the tone for the day. Two bus tours were organised taking in sites of significance. One bus travelled out to Pito-one visiting Te Puni Urupā and Hikoikoi Pā. The other bus took in the sites of Te Ara o Ngā Tupuna along the south coast of Wellington.

Raranga/weaving, te reo Māori classes, Te Aro Pā walking tours and a Te Mātaiaho workshop were among the wānanga available across the program and were successfully delivered in our rohe and on premise at Wellington High School.

The feedback from our manuhiri was extremely positive and the feeling of

manaakitanga and connection resonated in that feedback.

Our Kura Ahurea program continues to grow and has been successfully educating schools on Te Atiawa, mana whenua history since the pilot group began its journey in 2017. The new intake for this year has added another 21 schools to the program, and now consists of 6 cohorts with more than 67 kura.

This is a fantastic reflection of the consistent and diligent hard work from all those involved in the implementation and delivery of this kaupapa.



Kura Huna 2023

It was fantastic to see whanaunga at our Rangatahi Wānanga – Kura Huna 2023 held in April at Hikoikoi.

37 local rangatahi, aged 13 to 17, joined our team leaders on a journey of exploration within the rohe they reside. They were welcomed to Hikoikoi with mihi whakatau, then shared whakawhanaungatanga. Connecting with mana whenua and learning about our Ahu Whenua Trusts ensured they

made deeper connections to the whenua through various kōrero and activities.

Activities experienced over the two days included:

- A sites of significance bus tour
- Waka Tour
- Visit to Matiu/Somes Island
- Shared kai and kōrero

The new experiences will enhance the growth of these young individuals, who are now familiar with Māori knowledge acquired from a mana whenua perspective.

We are grateful for funding support received from the Wellington Community Trust: He Rau Aroha and the support of Ngahuru Charitable Trust allowing this kaupapa to be offered to rangatahi within our rohe.



Te Raukura - a symbol of faith, hope, and compassion!

Te Raukura represents spiritual, physical, and communal harmony and unity, a symbol of faith, hope, and compassion for all of mankind and the environment in which we live. It is also the name given to Te Wharewaka o Pōneke by mana whenua Te Ātiawa.

At a discussion panel held recently at Booktown, Te Kahukura Festival 2023 'Invasion and Resistance: Facing up to Parihaka', the Hon. Mahara Okeroa reminded us of the significance of Te Raukura and the power this symbol continues to provide for mana whenua and descendants of Tohu Kākahi and Te Whiti o Rongomai.

Discussing Parihaka alongside Mahara were Rachel Buchanan, Richard Shaw, Vincent O'Malley and Chris Findlayson with the session moderated by Paul Diamond.

Te Raukura is an important symbol of our tribes who affiliate to the Taranaki rohe, captured in the form of a white feather, or a plume of white feathers. They proudly adorn Te Rerenga Kōtare (waka taua), at Te Wharewaka o Pōneke and feature on the cover of this newsletter edition.

Pictured below Hon. Mahara Okeroa, Rachel Buchanan and Richard Shaw.



He whaikororia ki te Atua i runga rawa

Glory to God on high

He maungarongo ki runga i te mata o te whenua

Peace on earth

He whakaaro pai ki te tangata

Goodwill to all mankind



A glimpse at the past.....

Below is a scan taken from the
**Victory Queen Carnival Coronation
 Ceremony souvenir programme
 featuring Mrs. E.T.W. Rio Love.**

Original article taken from Papers Past.

At a meeting of the Hutt Valley executive of the Victory Queen Carnival in 1941, it was decided that in view of the short time available to arrange a preliminary contest between princesses it would be better to follow the original scheme of electing one queen for the Valley with her

princesses representing different districts and interests, and to conduct the campaign from the outset on the same lines as are being followed in Wellington for the Victory Queen Carnival.

The first princess to be elected, Makea Nui Takau, Ariki of Rarotonga, Mrs. E. T. W. Love, is well known to the people of the district as a leader of Māori and patriotic activities. Mrs. E. T. W. Love proved such a popular choice that she was asked by the executive to accept the title of

queen for the Valley. The role of princess representing the women's organisations of the district for which she was first selected, was filled by an attractive member of the younger set, whose name, together with those of the other princesses, will be announced as soon as the formalities are completed.

Mrs. Love will also have the honour of being the first queen of the new city of Lower Hutt.



QUEEN OF HUTT VALLEY AND PRINCESSES

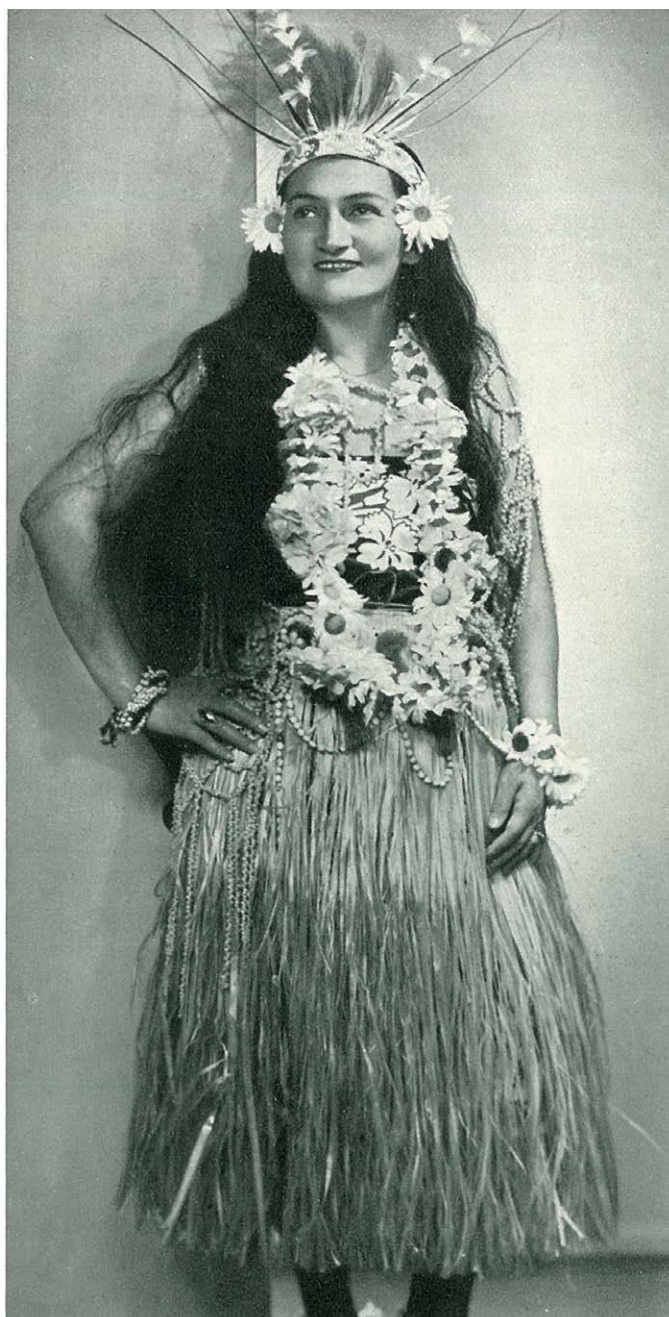
Colours: Green and Gold

Mrs. E. T. W. Rio Love

1,012,046 VOTES

EXECUTIVE OFFICERS

Chairman	-	-	E. MUIR
Secretary	-		V. A. NOBLE
Asst. Secretary	-		E. T. McKAIN
Treasurer	-	-	O. SILBERY



Employment Opportunities

If you are looking for a new role or change in career why not check out vacancies at some of our properties and joint ventures and partnerships listed below:

Metlifecare, Palmerston North

7 Fitchett Street, Central Palmerston North, Palmerston North 4410
Reception Phone: (06) 350 6400
Email: palmerstonreception@metlifecare.co.nz
Hours: 8am - 4:30pm, Monday to Friday. No weekends or public holidays

Village at the Park, Wellington

130 Rintoul Street, Berhampore, Wellington 6023
Phone: (04) 380 1361

Mitre 10 MEGA, Palmerston North

250-270 Featherston Street, Palmerston North

the work
collective



For further information contact Ben Love or Donna Lynch

Ben Love

AWF Wellington Business Manager
ben.love@awf.co.nz | 027 499 0872

Donna Lynch

General Manager
donna.lynch@theworkcollective.co.nz
021 527 258

Websites and Facebook Pages

Both Trusts have their own dedicated websites and Facebook pages. Please remember to FOLLOW us on Facebook to ensure you receive all notifications. Whilst some information will be applied across both Trusts, we can now bring you updates that are focused on each Trust's assets.

Wellington Tenth Trust

www.wtt.maori.nz
www.facebook.com/wttnz.

Palmerston North Māori Reserve Trust

www.pnmrt.maori.nz
www.facebook.com/pnmrt



Whare Mahana - Matiu Island Accommodation

There is a whare on Matiu/Somes Island that is available to hire.

Whare Mahana is a great place to spend a night or two, or to simply pop into for a hot cuppa on a day trip! The whare accommodates up to 8 people, with nightly rates as below.

Nightly Charges

- ▶ **\$20.00** per adult
- ▶ **\$10.00** for five to 16 year olds
- ▶ **Free** for children under five
- ▶ **\$40.00** minimum nightly charge

You can find more information about Matiu Somes Island and Matiu Somes Island Charitable Trust at <https://matiusomesisland.nz>. For all booking enquiries please email us at info@tekau.maori.nz



Events Calendar

Matariki 2023

Wellington Waterfront
14 - 21 July 2023

Welcome for International Wāhine Football

Wellington Waterfront
20 July 2023

Hikoikoi Waka ama Club – Matariki Race

Hikoikoi, Petone
22 July 2023

Palmerston North Māori Reserve Trust AGM

Convention Centre, Palmerston North
26 August 2023

Wellington Tenth Trust AGM

Te Raukura, Te Wharewaka o Pōneke
2 September 2023

General Election

Nationwide
14 October 2023

Ngā Tekau Alcohol and Other Drugs Service

Hikoikoi, 24D Marine Parade, Petone
Monday - Friday 8:00am - 4:00pm

For free and confidential information please
contact Phone: 04 473 2502
Email: info@tekau.maori.nz

Education Grants and Scholarships

Did you know whānau can access the Generosity website to gain information about potential grants and scholarships?

www.generosity.org.nz gives you access to more than 4,000 scholarships and awards for individuals through the givME service. It is a valuable tool.

To access the grants and scholarships you must be a shareholder or a descendant of a shareholder. Email us at info@tekau.maori.nz with your shareholder number and we will provide you with our link.

Once registered, enter your details and the tool will provide you with a list of grants and scholarships that best fit your study. Some schools and many universities also subscribe to the service.



www.generosity.org.nz

He mana tō te kōwiri | Your choice has mana!

Are you enrolled to vote in the 2023 General Election?

The Electoral Commission has confirmed the timetable for the 2023 General Election following the Prime Minister's announcement of the election date.

The 2023 General Election will be held on Saturday 14 October 2023.

Make sure you're enrolled and ready to vote. You can enrol, check or update your details online at vote.nz. There are currently 7 Māori electorates and 65 general electorates



Me Rēhita. Me Pōti. Kia rāngona.
Enrol. Vote. Be heard.

vote.nz
0800 36 76 56





Mānawatia a Matariki

www.wtt.maori.nz
www.pnmrt.maori.nz

“Me mātau ki te whetū, i mua i te kōkiri o te haere.”

“Before you set forth on a journey, be sure you know the stars.”



HIWA-I-TE-RANGI

Hiwa-i-te-rangi grants our wishes and aspirations for the coming year.



WAIPUNA-Ā-RANGI

Waipuna-ā-rangi is associated with the rain.



URURANGI

Ururangi is the star associated with the winds.



WAITĪ

Waitī is associated with all fresh water bodies and the food sources that are sustained by those waters.



MATARIKI

Matariki signifies reflection, hope, our connection to the environment, and the gathering, health & wellbeing of people.



TUPUĀRANGI

Tupuā-rangi is associated with everything that grows up in the trees: fruits, berries, and birds.



WAITĀ

Waitā is associated with the ocean, and food sources that live within it.



PŌHUTUKAWA

Pōhutukawa is the star associated with those that have passed on.



TUPUĀNUKU

Tupuānuku is associated with food that is gathered / harvested from the soil.