



NOVEMBER 2020

Tū Tama Roto, Tū Tama Waho

To know oneself, is to know others



Message from the
Chairs, Anaru Smiler
and Liz Mellish

Toi Raranga Installed
in Waitohi Community
Hub, Johnsonville

Meet Wellington Tenth's
Trustee Richard Te One
Junior

Message from the Wellington Tenth Trust Chairman, Anaru Smiler



“ Tēnā koutou,
ka nui te mihi ”

Tēnā koutou, ka nui te mihi

It was fantastic seeing you and your whānau attend this year's Annual General Meeting, especially under the difficult restrictions of COVID-19.

Living with COVID-19 restrictions gives us some uncertainty and we needed to think about how we could ensure that everyone could participate in this AGM. Livestreaming the AGM provided an alternative option for those that were unable to attend in person. The livestream approach was received positively by the owners and all in all, it turned out to be a very successful meeting.

One of the key highlights for this year was the Trust's asset value reaching the \$100 million mark with good profits leading into the new financial year. This financial position has enabled the Trustees to increase the dividend per share in acknowledgement of the economic climate following the COVID-19 lockdown, including a special dividend to owners.

The Trustees also shared our strategic plan approach of four pou; Te Pou Whenua, Te Pou Whānau, Te Pou Mana and Te Pou Pūtea. The strategic plan provides us with a positive vision and focus for the future of the Trust. Trustees are looking forward to implementing the strategy with you and your whānau.

The Trust would also like to welcome our new Trustee Richard Te One Jnr to the Board and wishes Mark Te One and Lennox Love all the best in their retirement.

As we head into November our team are preparing for the annual distribution of dividends. Please get in touch with the office if you need to update your contact details and to provide your bank account number. We want to make sure this is done correctly – particularly before the festive season!

As this will be our last update before Christmas, on behalf of the Trustees we would like to wish all a happy and safe festive season with your whānau.

Nō reira, tēnā koutou, tēnā koutou,
tēnā tātau katoa.

A handwritten signature in black ink, appearing to read 'Anaru'.

Anaru Smiler
**Chairman Wellington
Tenth Trust**

Message from the Palmerston North Māori Reserve Trust Chairman, Liz Mellish, MNZM



“ Tēnā koutou,
tēnā koutou,
tēnā koutou
katoa ”

Tēnei te mihi ngā whānau O Palmerston North Māori Reserve Trust.

I am hoping this newsletter finds you all in good health and enjoying the spring in Aotearoa.

We are certainly in a better place with COVID-19 than we were in winter and for those of us not in Auckland, Level 2 and Level 1 has been a comfortable place to be. It was however a good decision to prepare and hold our Annual General Meeting as we did to ensure the well-being of the whānau. The AGM success was the result of the hard work by our staff of Hikoikoi Management and it is important to acknowledge the huge amount of work that went into making the day such a success. I am also very pleased to hear from whānau who tuned in on our live broadcast and were able to participate in this new era of electronics.

There was no election this year as the number of places was not contested and both standing Trustees put themselves forward again. Congratulations therefore to Takiri Cotterill and Paula King. These hard working Trustees are passionate about our Trust, its owners and their whānau.

I am pleased to say despite COVID-19 all our commercial tenants remain in business and the progress we have been making with further developments is well on track. Keith and I have visited our Early Childhood Centre and found the children, parents and teachers are enjoying their new space. It gives us all a feeling of satisfaction as landlords to house tamariki in warm, clean and safe environments. The old premises were in a bad state and we will again burn the building down as it is not fit for removal.

Palmerston North as a regional city is performing the best in the country which is very exciting. When talking with the Mayor and local business people there is a positive vibe in this thriving community. This is in contrast to the largest city which by all accounts has struggled business-wise. Our three major projects the new premises for Steve's Tyres, The Rangitikei Street retail shops and Baxters student accommodation are all well into planning stages. Steve's Tyres building will start on October 12th and be completed by March 2021, while Baxters and Rangitikei Street are close to having building consents.

We are all in good heart and looking forward to 2021 hoping the country settles well after the election and we progress with even better understanding and treatment, possibly even a vaccine for COVID-19. Nevertheless, our strategies for our properties are fulfilling all expectations and we are delighted to be keeping our distribution at pre-covid levels.

Distributions will be paid out in late November so we all hope that this can help in supporting your Christmas holidays and the special day. We do want to get monies to you so please send in your details to Kathleen should they have changed so we can ensure you get paid in a timely manner.

Liz Mellish, MNZM
**Chairman Palmerston North
Māori Reserve Trust**

Contents



02

Message from the Wellington Tenth Trust Chairman, Anaru Smiler



03

Message from the Chairman Palmerston North Māori Reserve Trust, Liz Mellish, MNZM



05

Our annual distribution date occurs in late November. Please contact us to update your details.



06

New Wellington Tenth Trustee Richard Te One Junior



08

Wellington Tenth Trust and Palmerston North Māori Reserve Trust property developments



10

Recently commissioned artwork, 'Whetūrangi', for the new community space, Waitohi, in Johnsonville.



About

The Wellington Tenth and Palmerston North Māori Reserve Trusts have been established since 1839 and 1866 respectively and are Ahu Whenua Trusts (Ture Whenua Act, 1993).

Both the Trusts administer Reserved Lands on behalf of the land owners.

Contact Info

-  wtm.maori.nz
-  pnmrt.maori.nz
-  0508 445 645
-  info@tekau.maori.nz
-  facebook.com/wttnz
-  facebook.com/pnmrt
-  Wellington Office
Level 1, Te Raukura (Te Wharewaka)
2 Taranaki St, Wellington
PO Box 25499, Wellington

Petone Office
24d Marine Parade, Petone 5012

PO Box 39294
Wellington Mail Centre, 5045

COVER:
Wharewaka, Wellington City. Shutterstock.com

PUBLISHED BY:
Hikoiki Management Limited

DESIGN AND LAYOUT:
DHC Events & Creative

CONTRIBUTIONS:
Editorial contributions and ideas are welcomed. They can be emailed to info@tekau.maori.nz. Please include the writers name and a high resolution image to accompany the story.

Hikoiki Management Limited will hold the copyright for submitted articles and photographs published. Articles and photographs in this publication cannot be published elsewhere without permission.



Dividend Distribution

Our annual distribution occurs in late November 2020. Payments are only paid into a bank account so bank account details must be supplied as early as possible to ensure any updates are made prior to the distribution date.

Before a payment is made, the minimum accumulated distribution amount for owners with NZ bank accounts is \$50, and the minimum accumulated distribution for owners with overseas bank accounts is \$100.

For inquiries regarding dividend payments please contact our Database Administrator, Kathleen Thompson on **0508 445 645**, if in Wellington call **473 2502**, or email Kathleen at info@tekau.maori.nz



Unclaimed Distribution

We have lost contact with the following owners.

Please contact Kathleen Thompson at the Executive Office if you know any of these names, or their whānau:

Phone: 0508 445 645, if in Wellington call 473 2502

Email: info@tekau.maori.nz

Winifred **Thomas**

John **Te Paki**

John **Brown**

Pare **Mangemange**

Pena **Tauhei**

William **Skipper**

Wiremu **Hapi li**

Hema **Hapi**

Jacqueline **Edwards**

Tahu **Tanerau**

Te Rira **Rona**

Winnie **William**

Mane **Tukokiri**

Michael **Madden**

Lauralee **Wheatley**

Sandra **Edwards**

Tuhirani **Tamarua**

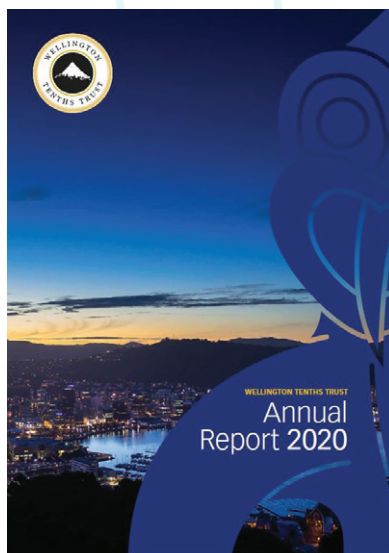
Shirley **Edwin**

Hinekiwi **Puketapu Matoe**

William **Manukonga**

Annual Reports 2020

Hard copies of our 2020 Annual Reports, produced for the Annual General Meetings, are still available. To receive a copy please contact info@tekau.maori.nz or call 0508 445 645, if in Wellington call 473 2502



New Wellington Tenth Trustee

Richard Te One Junior



At the Annual General Meeting on 05 September 2020, Richard Te One Junior was endorsed as a Trustee of the Wellington Tenth Trust Board.

Richard is a resident of Lower Hutt and is married with two daughters aged 22 and 18. He is self-employed and has run a gardening business for the past 13 years. Prior to this he spent 13 years working in public health, including nine years at Regional Public Health in Wellington where he had a particular focus on the public health regulatory

aspects of the Sale of Liquor Act and Smokefree Environments Act. Elected to the Sacred Heart College Lower Hutt Board of Trustees in 2013 he has been the Board Chair since 2018. Richard is also a musician who has played professionally for the past 35 years across New Zealand and internationally and he continues to play locally in various bands.

Our Chair and fellow Trustees warmly welcome Richard, and the attributes he brings, to further enhance Trust projects and activities.



Wellington Tenth Trust

Farewells Trustees

Mark Te One

How do we start to provide an acknowledgment for Mark who has devoted his life to Wellington Tenth Trust and its owners? He came into the Trust as a young man and left as a revered elder statesman. Mark learnt from the elder statesmen, Charlie Hohaia, Roger Manaia, Sam Raumati, Moutere Love, Peter White to name but a few. He was at the forefront of influencing and negotiating with Central Governments of all hues and at Local Government. He also was hugely involved with the Treaty Claim for Port Nicholson and is well versed in

the history of Te Ātiawa and Taranaki Whānau in Wellington. He attended the Waitangi Tribunal hearings and worked alongside our historians, lawyers, owners and other Trustees.

After some 35 plus years of service it is with sadness we farewell Mark as a Trustee for Wellington Tenth Trust.

We are however, pleased that Mark will remain as a Trustee on Palmerston North Māori Reserve Trust and will now have a little more time to spend with his whānau and mokopuna.



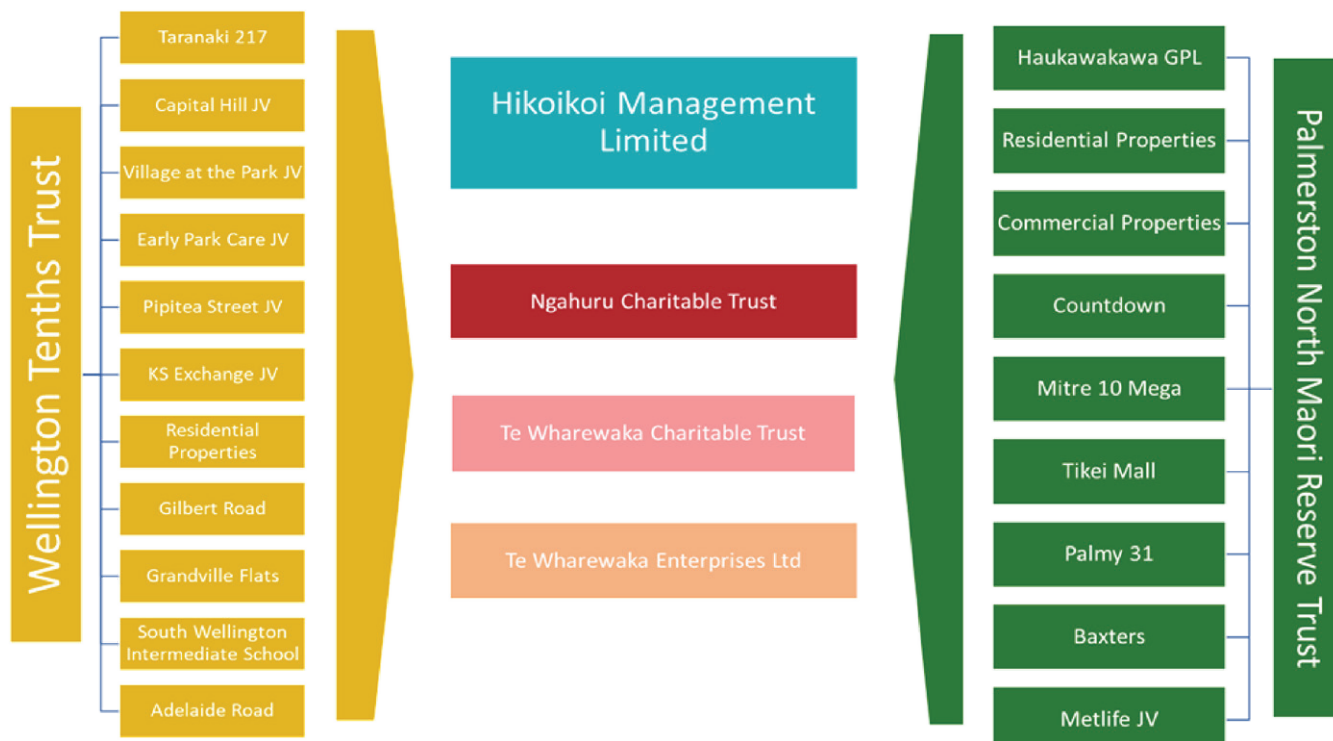
Lennox Love

Just prior to this year's Annual General Meeting Lennox announced he would not be available for reelection as a Trustee for Wellington Tenth Trust. After three terms Lennox has made a huge contribution, utilising his knowledge and experience gained during his time at Deloitte New Zealand.

We wish Lennox all the best for the future as he too will enjoy a little more time with growing whānau.



Wellington Tenth's Trust and Palmerston North Māori Reserve Trust Organisational Structures



Hikoikoi Management Limited is the operational entity for this organisation which contains Joint Venture (JV) companies and Trusts with a combined assets total of \$215million.



Wellington Tenth Trust Property Developments

Wellington Tenth Trust property development in Adelaide Road receives two awards

We are pleased to announce that Architecture Plus have recently received two awards for our Wellington Tenth Trust town house property development at 383-387 Adelaide Road. Presented by Te Kāhui Wahihanga New Zealand Institute of Architects and Resene these awards were presented to Architecture Plus in the category 'Housing – Multi Unit.'

The first award relates to colour palette used on the exterior of the townhouses with attributes cited as follows;

A simple but vibrant palette of red, white and black gives individual identity to blocks of townhouses while powerfully unifying the site. Inside an unexpected touch of pale blue flows down the internal stair, complementing the natural timber screen.

The second award relates to construction of this modern townhouse development cited as follows;

This vernacular multi-unit project establishes an identity based on New Zealand domestic architecture traditions. The townhouses maintain a relationship to the local character of the streetscape through their scale and form, with a simple gable and clear identity. Excellent site planning balances and delineates public and private domains down the length of the site, providing outlooks for everyone. Individual units have received careful attention; light is admitted deep into internal spaces through turning the stairwell across the unit, a move which also partially separated kitchen and living spaces.

These properties in Adelaide Road were a significant development for the Wellington Tenth Trust as the townhouses are built on our whenua and owned and controlled 100% by the Trust. These townhouses have been built to a high quality, attracting good rental incomes to help build our pūtea for future investment back into our whenua and our whānau and it is great to be recognised by the building industry.

Our thanks to the team at Architecture Plus especially Stuart Guardyne, Belinda Tuohy and Geordie Shaw.



Palmerston North Māori Reserve Trust Property Developments

Palmerston North Māori Reserve Trust Childcare Centre Opening

On 25 June 2020 our Chairman and fellow Trustees were pleased to open their newly completed property development, an early childhood centre on Ngata Street, Palmerston North.

The dawn ceremony led by mana whenua Rangitane, was attended by Trustees alongside the Mayor of Palmerston North, Grant Smith. Our tenant, Learn-a-Lot-Kidz are delighted with this purpose built facility and to move from the old villa on Nash Street. Learn-a-Lot-Kidz have increased the number of tamariki who are enjoying warm and safe areas that are much more suitable for each age group. Trustees are proud to be good landlords with manaakitanga as their guiding principle.



Other Developments

67-71 Grey Street is a development that has just commenced and has been let to Steve's Tyres. The building contract has been let to Colespec Construction Limited, a company that recently built the new Child Centre for the Trust.

Baxters Limited is a hostel which is mainly rented by students at Massey University and the Trust intends to build a further 9 double bedroom units on the existing site.

152-166 Rangitikei Street is a vacant site that backs onto Tikei Mall and a 930sq metre retail block is planned. Heads of agreement have been signed with two tenants and the plan is for this project to be completed by early 2022.



Baxters on Ranfurly Street development



152-166 Rangitikei Street development

Waitohi Community Hub, Johnsonville

Wellington City Council recently commissioned a site-specific artwork, 'Whetūrangī', for the new community space, Waitohi, in Johnsonville.

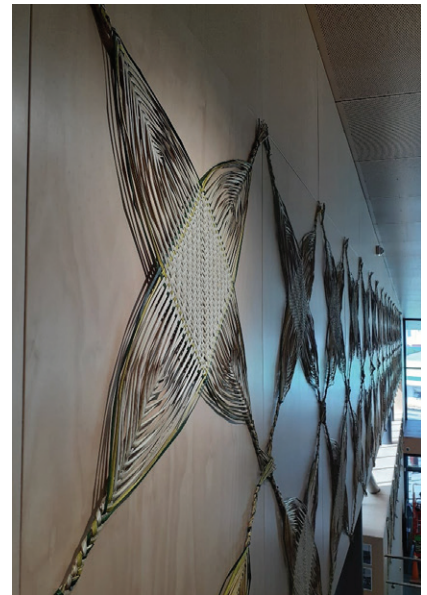
Our Te Rōpū Raranga o Manaia, led by our Palmerston North Māori Reserve Trustee Takiri Cotterill, collaborated with Maureen Lander in creating this beautiful artwork.

'Whetūrangī', referring to the starry sky, comprises of 48 woven harakeke whetū (stars) which stretch across a large internal wall at Waitohi.

The size and shape of every whetū is similar, however each kaiwhatu (maker's) individual style and creativity can be seen in their weaving.

The concept for the artwork evolved in relation to the 'forest' evoked by the architecture and colours of Waitohi, along with the timing of the weavers' final wānanga at Hikoikoi (Petone) on the cusp of Matariki 2020.

Their creation evolved over several months and was unveiled on 12 September 2020.



Trustee Profile Takiri Cotterill

**Ko Taranaki te maunga
Ko Whanganui-ā-Tara te awa
Ko Tokomaru te waka
Ko Te Ātiawa te iwi
Ko Ngāti Te Whiti, Ngāti Puketapu,
Ngāti Otaraua ōku hāpu
Nō Paraparaumu ahau
Ko Takiri Cotterill tōku ingoa.**

As a Trustee for the Palmerston North Māori Reserve Trust I bring a passion to see whānau, hāpu and iwi development in all aspects of our lives. I also bring my experience as a

Company Director for Alpha Corporation Limited and Coastland Shoppingtown Limited. I really enjoy being involved as a Ngahuru Charitable Trust Trustee, supporting social and cultural development initiatives that come under the Wellington Tenth Trust and Palmerston North Māori Reserve Trust umbrella. I have been coordinator of Te Rōpū Raranga o Manaia for the past 11 years which is supported by the Ngahuru Charitable Trust. I have 30 years social work experience working in the area of whānau Māori well-being including community development and working with Rangatahi and Tamariki care and protection.



Wellington's 'Waripori' Street corrected to honour chief Te Wharepōuri

Waripori Street in Berhampore has now been corrected by Wellington City Council and given its rightful name of Te Wharepōuri Street by its Strategy and Policy Committee on 5 March 2020.

Wellington Tenth's Trust is delighted that Wellington City Council has resolved for Waripori Street to be correctly spelt acknowledging their tupuna, Te Wharepōuri. The north-western end of the street is also located within the Wellington Tenth's Trust development precinct, as is the South Wellington Intermediate School, Village at the Park retirement village, and The Park Early Learning childcare centre.

These lands are remnant of the Newtown reserves and are significant to the Trust and its members and it was therefore fitting that students from

South Wellington Intermediate School newly formed kapa haka group were keen to learn more about Te Wharepōuri and support this change.

As a point of interest Te Wharepōuri is the first street sign in Wellington to display a tohutō but won't be the last street sign to be corrected in the future.



Save the Date Te Rā o Waitangi



TE RĀ O WAITANGI

A celebration of Waitangi Day and
Te Raukura's 10th year on the waterfront

6 February 2021, 10am-2pm
Te Raukura, Te Wharewaka o Pōneke
Whai Repo Lagoon, Wellington Waterfront



Absolutely Positively
Wellington City Council
Māori Whakaaro



Hikoikoi
MAIWA HŌ

Karakara Cafe

Matariki 2020

Te Wharewaka o Pōneke were so pleased to open Matariki celebrations in the City 2020 working within the COVID-19 environment and the challenges this presented.

Our programme supported Wellington City Council's move from a digital platform to having a physical presence on Wellington Waterfront even for a short period of time.

Tū Tama Roto, Tū Tama Waho – to know oneself, is to know others!

Matariki 2020 allowed us all time to reflect on our resiliency during the onset of COVID-19, those that have past and the challenges that lie ahead.

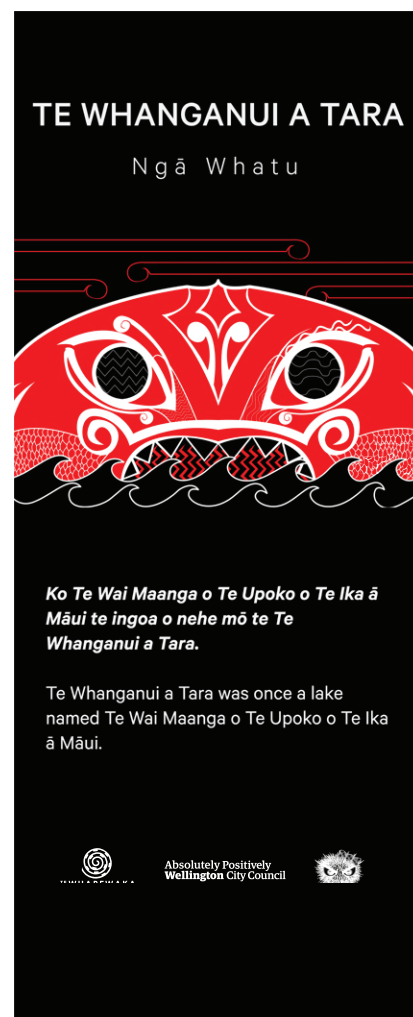
During our two-week celebrations in the City we launched 'He Karakia mō Matariki' written and recorded by Ben Ngaia with video produced in partnership with WellingtonNZ and gifted to Wellington City by Te Wharewaka o Pōneke. You can view

this video on your website www.wharewakatours.maori.nz

Our talented weavers from Te Rōpū Raranga o Manaia displayed their work on Saturday 18 and 25 July. These sessions also presented an opportunity to share their knowledge with the public and do some weaving of their own along with having items available for purchase.

Our Kura Ahurea education programmes took centre stage with the launch of 'Ngā Pou o Roto' Exhibition. This exhibition open to the public saw a series of 14 banners displaying images designed by our resident artist and tour guide Taupuruariki (Ariki) Brightwell. Ariki also gave a talk that was well attended by members of the public who are keen to learn more about the stories of our history as Te Ātiawa. These banners are now on permanent display inside our waka space at Te Raukura, Te Wharewaka o Pōneke so next time you are in Wellington come along and take a look.

Our thanks to all who continue to support events here at Te Raukura.



He Karakia Mō Matariki



Nā Ben Ngaia

Tuia i runga, tuia i raro
Tuia te here tangata i a Nukuārangī
Ki a Puanga Kai Rau, Ki a Matariki
Ahunga Nui
Tō mata tini me pā ki roto, tō mata tini
me pā ki waho
Kia horahia te kura, he kura nui, he kura
roa
He kura takatū mai i a rongotaketake
Ka rongo te pō, ka rongo te ao
Ka rongo i te ahi kā roa i tūārangī te
whakaeke nei
Ka whakaeke te haukai kia tina
Ka whakaeke te haukai kia toka
Ka whakaeke te haukai kia uru ora
Whiti, whano, tau mai te mouri
Haumi e! Hui e! Tāiki e!



Woven from above, woven from
below

Interlacing our fundamental virtues
to be in balance with the celestial and
human realms

To Puanga and Matariki, bringing
forth aspirations of kindness and
generosity

May your divine countenance be
imbued inherently, manifesting itself
throughout the community

So that goodwill is declared, may it
be strong and enduring

An enduring gift established on the
pillar of peace

Resounding throughout times of
hardship and times of abundance

Resounding are the fires of ancestral
connection, from times immemorial
that ascend forth

May the gifts shared from one to
another be upheld

May these gifts be affirmed

May these gifts sustain life and its
vitality, may it be enduring

Proceed forth with hope, bringing
balance to our lives

Bringing people together as one!



Māori Land Court 2021 Clinic Dates

Māori Land Court are operating clinics in both locations from 10.30am to 2pm on the respective days. They will slot you into a suitable time, once you make contact with them.

PETONE

Petone Library (off the Atrium)
11 Britannia Street, Petone

Bookings are through Wiri Love at the Aotea office (06)349 0770

January 2021 – TBC	8 July 2021
4 February 2021	5 August 2021
4 March 2021	2 September 2021
8 April 2021	7 October 2021
6 May 2021	4 November 2021
3 June 2021	2 December 2021

PORIRUA

Ngati Toa Runanga (Puna Ora Conference Room)
26 Ngati Toa Street, Takapuwahia, Porirua

Bookings are with Ngati Toa (Puna Ora) at Takapuwahia, Rhylee Parai-Karepa (04) 237 7922

January 2021 – TBC	7 July 2021
3 February 2021	4 August 2021
3 March 2021	1 September 2021
7 April 2021	6 October 2021
5 May 2021	3 November 2021
2 June 2021	1 December 2021

Websites and Facebook Pages

Both Trusts have their own dedicated websites and Facebook pages. Please remember to FOLLOW us on Facebook to ensure you receive all notifications. Whilst some information will be applied across both Trusts, we can now bring you updates that are focused on each Trust's assets.

Wellington Tenth Trust

www.wtt.maori.nz
www.facebook.com/wttnz

Palmerston North Māori Reserve Trust

www.pnmrt.maori.nz
www.facebook.com/pnmrt



Whare Mahana Accommodation Matiu / Somes Island

Whare Mahana is located on Matiu with accommodation facilities for up to 8 people. Booking enquiries for the whare can be made by contacting Kathleen Thompson

Email info@tekau.maori.nz or phone 04 473 2502 or 0508 445 645

This unique opportunity to explore Matiu, a predator free scientific reserve with a rich multicultural history, will be enhanced with an overnight stay with whānau and friends in Whare Mahana.

Nightly Charges

- ▶ **\$20.00** per adult
- ▶ **\$10.00** for five to 16 year olds
- ▶ **Free** for children under five
- ▶ **\$40.00** minimum nightly charge



Events Calendar

Te Rōpu Raranga o Manaia

Hikoiko

Thursdays, 5pm

Te Ataarangi Te Reo classes

Hikoiko

Tuesday Evenings

A new intake of ākonga joined at Matariki

Kaumātua Hui

Hikoiko

Mondays, 10am commencing Feb 2021

End of Year Office Closures

Closed for Christmas / New Year

24 December 2020 to 05 January 2021

Education Grants and Scholarships

Did you know that you can access the Generosity website to gain access to grants and scholarships for free?

www.generosity.org.nz gives you access to more than 4,000 scholarships and awards for individuals through the givME service. It is a valuable tool.

To access the grants and scholarships call your local library to see if they have subscribed to the service and then go into the library, login, and fill out your details. The tool will then provide you with a list of grants and scholarships that are best fit for your study. Some schools and nearly all universities subscribe to the service as well. But try your library first.

If you can't access the Generosity website through these avenues, then register on-line at the Wellington City Council library.



2020 Merchandise

If you are looking for something special for the whānau for Christmas this year we have a line of 'eco friendly' merchandise launched during Matariki at Te Raukura, Te Wharewaka o Pōneke.

www.wharewakatours.maori.nz/our-merchandise

How to order?

Once you have sent us your request details on-line an invoice will be created and sent to you for on-line transfer. Your item will be sent by standard mail once payment is received. Items can be purchased separately or you may wish to purchase our 'Eco Pack'. Prices include postage, packaging and GST.

\$120.00

'Eco Pack' contains: Thermo Bottle, Manhattan Thermo Cup, Eco Bag featuring unique indigenous art 'Hongi', and towel displaying 'Te Waka o Kupe'.

\$40.00

Thermo Bottle

Colours: Black, Grey, White

\$35.00

Manhattan Thermo Cup

Colours: Black, White

\$25.00

Eco Bag

\$25.00

Towel

EMAIL: admin@wellingtontours.maori.nz
with your details



www.wtt.maori.nz
www.pnmrt.maori.nz

