

NEWSLETTER PĀNUI



Tēnā koutou e ngā whānau whānui o Ngā Tekau o Pōneke
me te Whenua Porohita o Pāmutana.
E ngā mate kua haere ke te pō haere, haere.



UPDATE FROM THE CHAIRS



E ngā maunga, e ngā awa, e ngā hau e whā, tēnā koutou.

The events in Christchurch made an indelible mark on Aotearoa forever. Whilst we have wept for the whānau of the slain and the people of

Christchurch particularly our Ngāi Tahu Iwi I cannot help but consider our history and continuing struggle for peace and equity in our own land. We will all deal with the event in our own way, but I must say I am extremely sad. I wish to acknowledge all those who have passed particularly those close to our Trust.

Palmerston North Māori Reserve trustees have been very busy this year as we move forward with our strategic plan for development. After our successful Special General hui we have been involved with Metlifecare closely as we work through the partnership arrangements. Keith Hindle, Jeanie Hughes and I visited some of their sites in Auckland in late May which operate different models of care facilities. This gave us a first-hand view of what we wish to achieve in Palmerston North in our land development.

We have moved to the end of the financial year and preparation for the Annual General Meeting started in earnest in April. The Audit and Risk Committee have already had a teleconference with the audit team and will continue to keep abreast of progress as we review the performance for the past year.

We have had two major events which are now behind us namely, Waitangi Day celebrations and Te Matatini. Both lovely events and a real celebration of Te Ātiawa ki te Whanganui-ā-Tara in the capital city.

Continued on Page 2

Tēnā koutou katoa

It is with some relief that our legal team informs us that we have agreement over a settlement with the Skiffington Estate. This relates to claims dating back to 2008.



This along with a settlement over the Moana Road property will bring these long running legal matters started by the Serious Fraud Office to a conclusion. There will be a substantial financial settlement for the Trust. We hope to be able to outline those matters at the next Annual General Meeting. I would like to thank Nigel Moody and Callum Reid in particular for their work, and their teams at Gibson Sheat and Harbour Chambers respectively, for their assistance in finally bringing this matter to a conclusion.

On a personal note I am retiring from all Wellington Tenth's Trust and related Companies at the end of June with the objective in retirement to write a Māori geographical history of Te Upoko o Te Ika/Wellington for publication.

Nāku noa, nā
Morris Te Whiti Love
Chairman
Wellington Tenth's Trust

IN THIS ISSUE

- Update from the Chairs
- Property Updates
- PNMRT SGM held 9 February 2019
- Kanohi ki te Kanohi Succession hui
- Waitangi Day
- Te Taumata Blessing
- Te Matatini ki te Ao
- PNMRT Rangatahi Leadership Wānanga
- Aotea Māori Land Court Monthly Clinics
- Te Rōpū Kaumātua Hīkoikoī Trip
- Events Calendar
- Contact Us

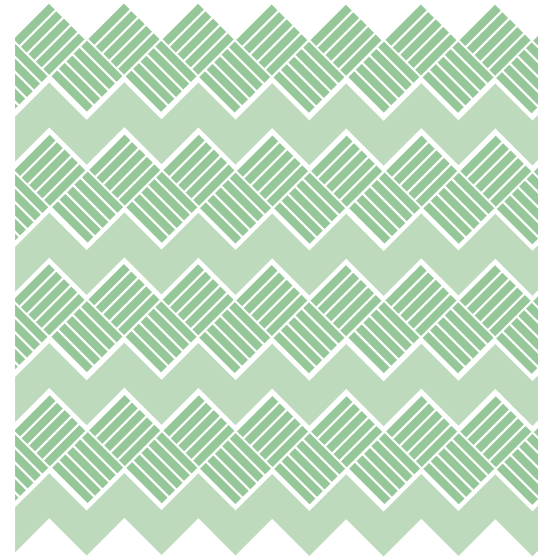
Staff are preparing to visit Taranaki and Te Tau Ihu in the coming months. On 13 and 14 June they will travel to Taranaki and visit Waitara, New Plymouth and Hāwera. Further information on the hui is included in this newsletter. Staff are wanting to locate owners and help prepare for the Māori Land Court succession process so we improve the succession rate for the Trusts.

I hope you are all well and that you are enjoying our warmer autumn weather. I am sure you have thought about how extreme and more dramatic our weather is these days and are ready to brace

yourselves for winter. I look forward to seeing those that are able to make our Annual General Meeting which is being held on 31 August 2019 at 10am, at the Palmerston North Convention Centre in Palmerston North.

Hei konā mai,

Liz Mellish, MNZM
Chairman, Palmerston North Māori Reserve Trust



PROPERTY UPDATES

Early Childhood Centre Development, Palmerston North

The Early Childhood Centre development that the Palmerston North Māori Reserve Trust has been working on has progressed slowly through the consent process at Council. Whilst it has been frustrating for us and our tenant we have been persistent. We met with Grant Smith, the Mayor of Palmerston North last month and he advised that the consent has now gone through, so we can now get on with building on the land that we have cleared in preparation.

Rangitikei Street Development, Palmerston North

Trustees of the Palmerston North Māori Reserve Trust are excited to advise that we now have a demolished site on Rangitikei Street, in preparation for a new retail complex. This is still in the early stages but Trustees are aware that gaining resource consent can be a tortuous process therefore we are doing much preparatory work in the coming months on this and will report back in due course as this develops.

Adelaide Road Development, Wellington

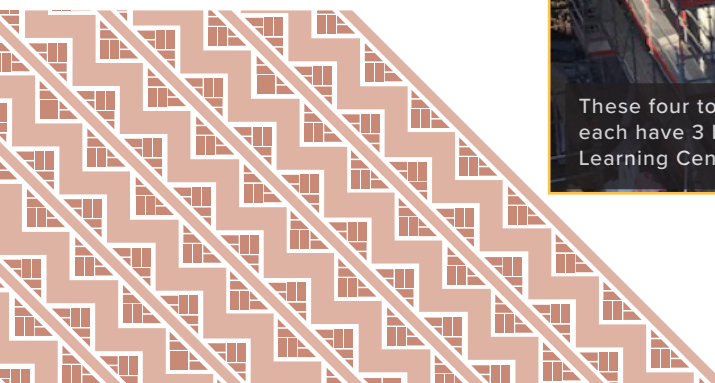
The Wellington Tenth Trust continues to be very busy on the property front with the development at 383 -387 Adelaide Road. This development is working steadily towards being completed on time and within budget and the 2 and 3 bedroomed townhouses will then be rented out by the Trust as part of the Trust's property portfolio. We look forward to opening these later in the year.



These blocks and their carpark at Adelaide Road are moving towards the internal fitout work and landscaping



These four townhouses on Adelaide Road each have 3 bedrooms. The Park Early Learning Centre is in the background



REO HUB EVERY TUESDAY AT HĪKOIKOI

Since 2016 we have been humbled by the support of Hīkoikoi Management Ltd, Te Wharewaka o Pōneke, Ngahuru Charitable Trust, Wellington Tenth Trust and the Palmerston North Māori Reserve Trust have provided to Toku Reo Charitable Trust. E kore e mutu ngā mihi ki a koutou katoa. In February this year, our proposal to our Trust partners was to establish a reo hub at Hīkoikoi. The proposal was accepted and we are so excited to have this up and running in 2019. Reo hubs celebrate reo Māori and help to normalise everyday activities by providing a space and/or time that supports and encourages people to use reo Māori. Research has shown that reo hubs are necessary for reo Māori communities to thrive as they have dedicated spaces where the reo is the primary language of use. On Tuesdays during school term from 8am-9pm at Hīkoikoi, the Raumati building will be a physical and time based reo hub. We coordinate and support a variety of kaupapa that aim to support whānau on their reo journeys. Article written by Moana Kaio

Village at the Park E-Block, Wellington

Village at the Park, which is a joint venture partnership between the Wellington Tenth Trust and Arvida, is on track for completion of the 24 apartments in E-Block (to be formally named!). The apartments have been sold down and when they are signed off by Wellington City Council and blessed by our kaumātua they will be quickly occupied. It is likely that not long after completion of E-Block that the last set of 25 villas will start along with the conclusion of the landscaping and roading for the Village. The new villas will require the demolition of some villas however the development will be staged with 11 new villas being built on vacant land in the Village. Some new roads will be established and some relocated along with a new entranceway off Rintoul Street.

2-8 Lambton Quay / Kate Sheppard Place, Wellington

This property was the subject of a purchase offer as a developer looked to do a development on the site similar to the one proposed by Kate Sheppard Exchange. That proved too difficult for that developer. The result is that our joint venture partner Equinox is continuing with planning to develop the site. This is a considerable challenge both financially and through the consenting process however Wellington Tenth Trust will continue to work with Equinox on potential options for the site.

Old Dominion Museum Building, Wellington

The Ministry of Culture and Heritage have now exited the tenancy which had the Great War Exhibition at the Old Dominion Museum Building in Wellington. The Trust and our joint venture partner, Massey University, are discussing the future tenancy options.



PNMRT SPECIAL GENERAL MEETING HELD ON 9 FEBRUARY

Earlier this year the Palmerston North Māori Reserve Trust Trustees met to discuss a proposal to develop the property adjacent to the Metlifecare Retirement Village in Palmerston North. As the matter would need to come to owners to attain sign-off they determined that they would like to take this to the owners at a Special General Meeting which was held on 9 February 2019 at Metlifecare, Palmerston North.

At the meeting the Chairman, Liz Mellish advised that the Directors of Metlifecare Palmerston North (Jeanie Hughes, Keith Hindle, and herself, from the Trust; plus Metlifecare Directors John Callandar, Glen Sowry, and Richard Thomson) had resolved to consider the proposal to build a new complex of 33 independent living units in a gated community for those in early retirement as a joint venture with Metlifecare on the land across the road. This would mean that the land from 3-15 Ngata and 8-28 Carroll Street in Palmerston North would need to be alienated from Trust ownership to transfer into a joint venture. The strategy proposed that the provision of land be the Trust's part of our 50/50 contribution, and Metlifecare would contribute money to initiate the physical build. The residents would have a licence to occupy, not to own the units. This allows a transition from very independent living, to graduate across the road to the hospital and full care units. The Trust would always retain the first right of refusal if Metlifecare wish to sell their interest. The vote was overwhelmingly in support of the Trusts work and Liz thanked owners for their support and encouragement.

It was also very heartening to have seen a number of young people attend the Special General Meeting and we would like to encourage our younger whānau to be actively involved. Your tamariki and mokopuna are more than welcome to attend our annual general meetings and learn about what the Trust does and the exciting opportunities ahead. A bus from Hīkoikoi and a bus from Taranaki come through to both Trusts hui, and it is always good to share kai with the whānau afterwards. As mentioned earlier the annual general meeting is being held on 31 August 2019 at 10am at the Palmerston North Convention Centre in Palmerston North. The Wellington Tenth Trust AGM is a week later, 7 September 2019 at 10am at Te Wharewaka, Wellington.

KANOHI KI TE KANOHI SUCCESSION HUI - TARANAKI

Staff are preparing to visit Taranaki and Te Tau Ihu in the coming months. On 13 and 14 June a rōpū from the Palmerston North Māori Reserve Trust and Wellington Tenths Trust are travelling to Taranaki. Our kaupapa is to connect with our owners kanohi ki te kanohi, and to provide support with the succession process. Staff are wanting to locate owners and help prepare for the Māori Land Court process so that we improve the succession rate for the Trusts. Staff from the Māori Land Court along with the team from Parininihi ki Waitotara will be alongside our team at this hui as further support.

We will be travelling to Taranaki visiting Waitara, New Plymouth, and Hawera, and hui have been arranged at the various venues as listed. A hui to Te Tau Ihu is planned for later in the year and we will let you know details of that closer to the time.

We look forward to seeing whānau based in Taranaki that need any assistance with succession at the hui. If you have any patai ahead of the hui please contact our Executive Office on our freephone 0508 445 645 or email info@tekau.maori.nz

13 June 2019
9.30am to 12noon
Mahia Mai a Whai Tara Trust
8 Warre Street
Waitara

13 June 2019
1.30pm to 4pm
Devon Hotel and Conference
Centre
390 Devon Street
Strandon
New Plymouth

14 June 2019
10am to 1pm
Te Korowai o Ngaruahine Trust
office
147 High Street
Hawera



WAITANGI DAY

A warm welcome is always extended to all at Te Wharewaka o Pōneke (Te Raukura), and Waitangi Day this year was no exception. Prior to the official welcome from Wellington's Mayor Justin Lester at 10am, we had a small group of American tourists who were welcomed with a mihi whakatau by the Wharewaka Tours team inside the whare. They were then brought through to witness the Waitangi Day formalities which were held outside the waka house at Te Wharewaka. After speeches kaihoe volunteers came in on Te Rerenga Kōtare and Te Hononga for a waka salute – it is always a highlight to see the waka out on the harbour and there was a large crowd gathered all around the lagoon to watch.

The mauri for Te Matatini ki te Ao was brought over from Pipitea Marae to Te Wharewaka and placed in our care. We were fortunate to hold the mauri stone in the waka house from Waitangi Day right up to the powhiri on 20 February. After further speeches we then moved inside the whare for a cup of tea and cake. Te Raukura (Te Wharewaka) celebrated its 8th birthday on Waitangi Day this year, opening its doors on 6 February 2011 and of course, we can't celebrate our birthday without birthday cake!

It was also opportune for our American tourists to meet with whānau, mingle with Councillors and test out their

TE TAUMATA BLESSING

Our new waka tētē was blessed on the morning of 16 January 2019 by Ben Ngaia with support of our Trustees, Councillors, kaimahi, and the wider iwi.

It was given the name Te Taumata by the Chairman of the Palmerston North Māori Reserve Trust who is also a Director of Te Wharewaka o Pōneke Enterprises Limited, Liz Mellish. The name Te Taumata talks about the aspirations and goals we have as Te Ātiawa ki te Whanganui-ā-Tara for our rangatahi and draws inspiration from the maunga whakahī of our rohe – Matairangi, Ahumairangi, Puke Ahu, Puke Ariki, and Puke Atua. Te Taumata and the inspiration behind it also reflects the opportunity the whare Te Raukura presents for the rangatahi and mokopuna of Te Ātiawa ki te Whanganui-ā-Tara - to grow and learn about their heritage and use this to reach their peak.

Te Taumata was carved by our whanaunga Phillip Nuku and we are so proud to have one of our own complete this work for us. Ngā mihi mahana Phil. Already Te Taumata is being widely used as one of our go-to waka for tours alongside Poutu.

Article written by Tuparahuia Pita

newly learned greeting “Ko (name) Ao” that they had learnt earlier that morning – a delightful surprise to many of us to hear them speak the reo. The festivities then moved over to Waitangi Park for music and more kai was available from stallholders till the early evening.

It was another memorable day and one of many that the Wharewaka has hosted, opening its doors to whānau, Wellingtonians, national and overseas visitors. Here is a small snippet from Bob Goodwin who was one of the tourists that was here on Waitangi Day – he had such kind words to say about the tour that he attended that we just had to share:

“Your group’s warmth and example give me hope that Americans can behave with civility once again even when they disagree.

God be with you,
Bob Goodwin“



Mark Te One and Liz Mellish (Directors of Wharewaka o Pōneke Tours) with waka kaihoe



Te Taumata



Waka Fleet from L to R: Te Taumata, Poutu, Te Hononga, Te Rerenga Kōtare



Left is Te Taumata and on the right is Poutu

TE MATATINI KI TE AO - 20-24 FEBRUARY, WELLINGTON

Another celebration of Te Ātiawa ki te Whanganui-a-Tara in the capital city was for Te Matatini ki te Ao 2019. We were blessed with having the Mauri for Te Matatini at Te Wharewaka (Te Raukura) from Waitangi Day, and it was very special for our kaihoe to be the ones to take the Mauri over to Waitangi Park in the morning ahead of the powhiri to welcome in the teams. What an outstanding powhiri it was, and it was very special for us here in Te Whanganui-a-Tara to be part of. The waiata that our wahine sung was reminiscent of times past and the taiaha, wero, poi, and supporting kōrero was not something that you see every day in the heart of Wellington. Of course, the waiata to support the teams was passionate and well received - such a wonderful celebration of our culture! And then over that weekend, even with the rain, manuhiri from around the rohe performed at Westpac Stadium with Ngā Tūmanako from Tāmaki Makaurau taking out the first placing. At the poroaki the Mauri was handed on to Tāmaki Makaurau who will host the next Te Matatini in Auckland in 2021, and then in 2023 it is Aotea's turn in Taranaki/ Whanganui!



Above and below: Kaihoe taking mauri stone over to Waitangi Park
Left: Mauri stone arriving at Te Wharewaka



Below: Wahine welcoming the teams

Below: Whaikōrero



PALMERSTON NORTH MĀORI RESERVE TRUST RANGATAHI LEADERSHIP WĀNANGA 2019

The week-long Rangatahi Leadership Wānanga is for rangatahi aged between 13-18 years of age that have a direct line of whakapapa to the original tūpuna of Palmerston North Māori Reserve Trust or the Wellington Tenths Trust.

The Rangatahi Leadership Wānanga is being held from:

Monday 7 October to Friday 11 October 2019 and involves staying for four nights at the Trust's site of its Executive Office at Hīkoikoi, Petone, Wellington.

The aim is to take our rangatahi on a journey of exploration, to find out who their people are, where their people are from, learn what the iwi is doing today, and how they can be our next generation of future leaders. Their connection to their people and place will be built up over the week through different kōrero and activities.

APPLICATIONS

There is a maximum of 15 places on the Rangatahi Leadership Wānanga. All applications that are completed correctly go into a draw. To participate in the draw for a place on the Rangatahi Leadership Wānanga you will need to complete the application form available from our Executive Office (which requires you to write an essay or something similar) and send a \$100 deposit to secure your place. All wānanga costs, activities and kai are covered by the \$100 deposit. Mattresses, pillows and sheets are onsite. Participants will not need to bring any money with them. If for economic reasons you are unable to pay the \$100 deposit to secure a place then please talk to Cherie Douglas at the Executive Office on 04 473 2502. The \$100 will be refunded to all applicants at the conclusion of the Wānanga.

- Please send all documentation to cherie@tekau.maori.nz or if by post send to Cherie Douglas, Hīkoikoi Management Limited, PO Box 39 294, Lower Hutt 5045.

- Applications **MUST BE RECEIVED BY 9 September 2019** (just after the Wellington Tenths Trust Annual General Meeting).

AOTEA MĀORI LAND COURT MONTHLY CLINICS 2019

As you may know the Aotea Māori Land Court now holds clinics at Hīkoikoi on a monthly basis. This is great for us and our whānau to have an Officer onsite to talk to whānau about succession. If you would like to make an appointment to talk through any enquiries you might have about succeeding land then please get in touch with the booking agent in the first instance to arrange an appointment. They hold clinics around the rohe, but of course we would love to see those of you that are Wellington-based come and see us at our Executive Office at Hīkoikoi in Petone.

PETONE

Wellington Tenths Trust and Palmerston North Māori Reserve Trust Executive Office, Hīkoikoi, 24d Marine Parade, PETONE 5023
Jason Harrison
(Advisory Officer)

Wednesday

10.30am – 1.30pm
19 June 2019
3 July 2019
7 August 2019
4 September 2019
2 October 2019
6 November 2019
4 December 2019

For bookings:

Kathleen Thompson or Cherie Douglas
(04) 473 2502
info@tekau.maori.nz

PORIRUA

Ngāti Toa Rūnanga, 26 Ngātitoa Street, Takapūwāhia, PORIRUA 5022
Conway Fleming
(Advisory Officer)

Wednesday

10.30am – 1.30pm
19 June 2019
4 July 2019
8 August 2019
5 September 2019
3 October 2019
7 November 2019
5 December 2019

For Bookings:

Missy Te Kahu
04 2377922
missy@ngatittoa.iwi.nz

Raylene Bishop
04 2384951
(administration)
takapuwahia@ngatittoa.iwi.nz

LEVIN

Muaūpoko Tribal Authority, 306 Oxford Street, LEVIN 5510
Jason Harrison
(Advisory Officer)

Monday

10am – 3pm
10 June 2019
8 July 2019
12 August 2019
9 September 2019
7 October 2019
11 November 2019
9 December 2019

For Bookings:

Rebecca Willis
06 3673311
admin@muaupoko.iwi.nz

PALMERSTON NORTH

Palmerston North City Library, 2 Floor, 4 The Square, PALMERSTON NORTH 4410
Jason Harrison
(Advisory Officer)
06 3490770

Wednesday

10am – 3pm
12 June 2019
10 July 2019
14 August 2019
11 September 2019
9 October 2019
13 November 2019
11 December 2019

For Bookings:

Maria Shiva
(Librarian)
06 3514100
mlcaotea@justice.govt.nz
maria.shiva@pncc.govt.nz

NEW PLYMOUTH

Te Puni Kōkiri, 465B Devon Street East, Strandon, NEW PLYMOUTH 4312

Richard Bennett
(Advisory Officer)

Tuesday

10.30am – 2.30pm
11 June 2019
9 July 2019
13 August 2019
10 September 2019
8 October 2019
12 November 2019
10 December 2019

For Bookings:

Roena Ruakere-Te Uira
027 845 6199
06 759 5450
ruakr@tpk.govt.nz

TURANGI

Tūrangi Heartlands Clinic, Work & Income Office, 65 Ohuanga Road, Town Centre, TŪRANGI 3334
Richard Bennett
(Advisory Officer)

Thursday

10.30am – 2.30pm
13 June 2019
11 July 2019
15 August 2019
12 September 2019
10 October 2019
14 November 2019
12 December 2019

For Bookings:

Annette Skeen
07 9066024
Annette.Skeen001@msd.govt.nz

TAUMARUNUI

Taumarunui Heartlands Clinic, Work & Income Office, Meredith House, 26 Miriama Street, TAUMARUNUI 3920
Conway Fleming
(Advisory Officer)

Friday

11am – 1.30pm
14 June 2019
12 July 2019
16 August 2019
13 September 2019
11 October 2019
15 November 2019
13 December 2019

For Bookings:

Briar Hicking
07 9045267
Briar.vanBuel001@msd.govt.nz

TE RÖPŪ KAUMĀTUA HĪKOIKOI TRIP TO MATIU ISLAND

On Monday 18 March 2019, we accompanied the kaumātua from Days Bay, Eastbourne over to Matiu Somes Island. When Liz Mellish and myself arrived at the wharf most of the kaumātua were already in the café across the road having a coffee or cup of tea. Loaded with goodies for lunch, we walked along the wharf to the shelters where a few others were eagerly awaiting the arrival of the East by West ferry. Gold Cards of course meant the day was cost free. The weather was brilliant, beautiful sunshine, with a slight breeze. Soon we were on our way to Matiu Island. For some it was their first trip to the Island, and for others it was a chance to see the latest developments. The trip over was smooth. The sea was so calm the fish were leaping out of the water - unfortunate for our fishermen because they were out of reach. Pretty to watch however.

Arriving at the Island, we were met by Gemma Wright who gave us the introductory talk which included a biosecurity check in the Whare Kiore. Transport up the hill was provided for those of us who needed help to get to Te Whare Mahana, while those who were more agile and fighting fit chose to walk the distance. Half-way up we could rest and take in the breath-taking views. We arrived at Te Whare Mahana to find the kettle boiling for a cup of tea and lunch. Excitement could be heard in the chatter and banter of the kaumātua as they enjoyed their kai. I can see why they called the house Te Whare Mahana, it is warm and very welcoming and having Gemma as our guide for the morning, who could ask for more – she really is a gem!

Article written by Lena Leatherby



Matiu Island Kaumātua



Wellingtons Premier Waka Ama event, the Matariki Harbour Challenge, takes place on Te Whanganui a Tara, Wellington Waterfront 15/16 June. Hosted by Hikoikoi Waka Ama at Te Raukura (Te Wharewaka o Pōneke). Come and see paddlers from across Aotearoa make a splash on the water in the ‘Coolest Little Capital in the World’. One of many events celebrating Matariki in the heart of the CBD. Email hikoikoiwakaama@gmail.com for entry details.

UNCLAIMED DISTRIBUTION

We have lost contact with the following Owners. Please contact Kathleen Thompson at the Executive Office if you know any of these names, or their whanau:

Gwendoline Carmel Andrews, Ross William Nunn, Carl Parsons, Marie Shuen, Doris Patukaha Vodanovich, Ian Thomas Watson, Ngaruaki Fay Waller Campbell, Louise Hopkins, Raymond William Henry, Koha Koremutunga Mako

GRANTS AND SCHOLARSHIPS

Did you know that you can access the Generosity website to gain access to grants and scholarships for FREE?

www.generosity.org.nz gives you access to more than 4,000 scholarships and awards for individuals through the givME service. It is a valuable tool and is available in any school, university, or council library that has subscribed. If you can't access the Generosity website through these avenues, then register online at the Wellington City Council library www.wcl.govt.nz/about/joining/. Our whānau have access through this site as Wellington Tenth's Trust

EVENTS CALENDAR



Sundays, fortnightly 10am
Waka kaupapa trainings, Wharewaka

Mondays, 10am
Kaumātua Hui, Hikoikoi

Tuesdays, All day
during school term
Te Puni Ihi Manaaki Reo Hub, Hikoikoi

Thursdays, 5pm
Te Roopu Raranga o Manaia Weavers, Hikoikoi

13 June 2019, 9.30am-12noon
Kanohi ki te kanohi Succession Hui, Mahia Mai a Whai Tara Trust, 8 Warre Street, Waitara

13 June 2019, 1.30pm-4pm
Kanohi ki te kanohi Succession Hui, Devon Hotel and Conference Centre, 390 Devon Street, Strandon, New Plymouth

14 June 2019, 10am-1pm
Kanohi ki te kanohi Succession Hui, Te Korowai o Ngaruahine Trust office, 147 High Street, Hawera

15 June 2019, 7.30am-4pm, and 16 June 2019 7.30am-12.30pm
Matariki Harbour Challenge Waka Ama event, Wharewaka

19 June 2019, 10.30am-1.30pm
Māori Land Court Clinic, Hikoikoi

21 June 2019, 6-10pm
Ahi Kā Matariki event, Te Raukura Te Wharewaka

29 June 2019, 6.30-6.40pm
Sky Show, Wellington Waterfront

3 July 2019, 10.30am-1.30pm
Māori Land Court Clinic, Hikoikoi

7 August 2019, 10.30am-1.30pm
Māori Land Court Clinic, Hikoikoi

31 August 2019, 10am
Palmerston North Māori Reserve Trust Annual General Meeting, Palmerston North Convention Centre, Palmerston North

4 September 2019, 10.30am-1.30pm
Māori Land Court Clinic, Hikoikoi

7 September 2019, 10am
Wellington Tenth's Trust Annual General Meeting, Te Raukura Te Wharewaka, Wellington

2 October 2019, 10.30am-1.30pm
Māori Land Court Clinic, Hikoikoi

7-11 October 2019
Palmerston North Māori Reserve Trust Rangatahi Leadership Wānanga, Hikoikoi

6 November 2019, 10.30am-1.30pm
Māori Land Court Clinic, Hikoikoi

CONTACT US

Executive Office
Hikoikoi
24d Marine Parade
Petone
PO Box 39 294
Lower Hutt 5045
04 473 2502
Freephone
0508 445 64564
info@tekau.maori.nz

Wellington Office
Level 1, Te Raukura
(Te Wharewaka)
2 Taranaki Street
Wellington
PO Box 24 599
Wellington 6146
04 901 3332

www.tekau.maori.nz
Find us on facebook